

# Component Placing, Electrical

Applicable for K850

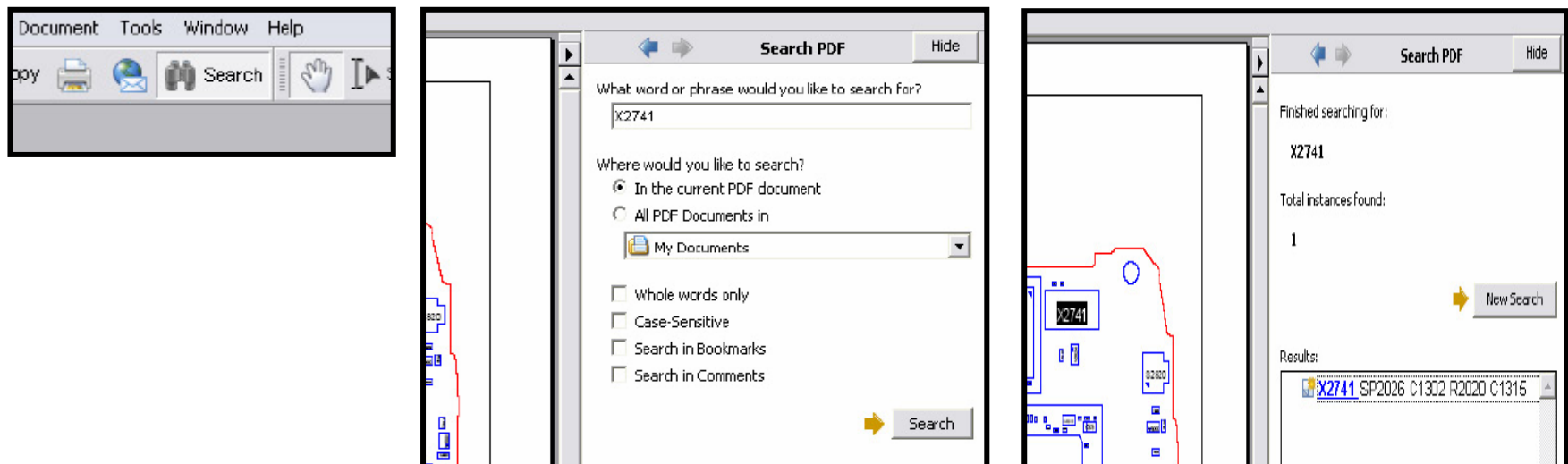
## Contents

1	Mounting drawing table .....	2
2	Mounting drawing.....	3
3	Revision history.....	6

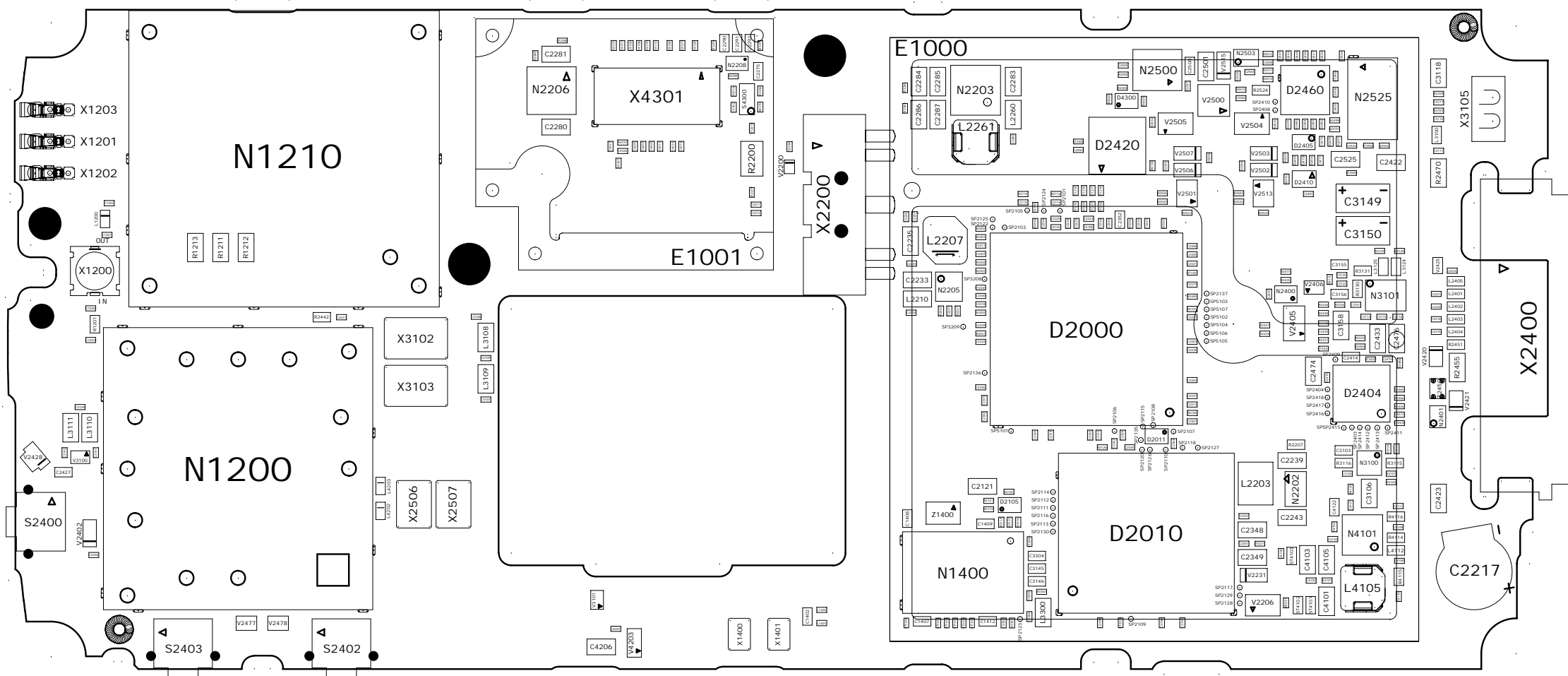
# 1 Mounting drawing table

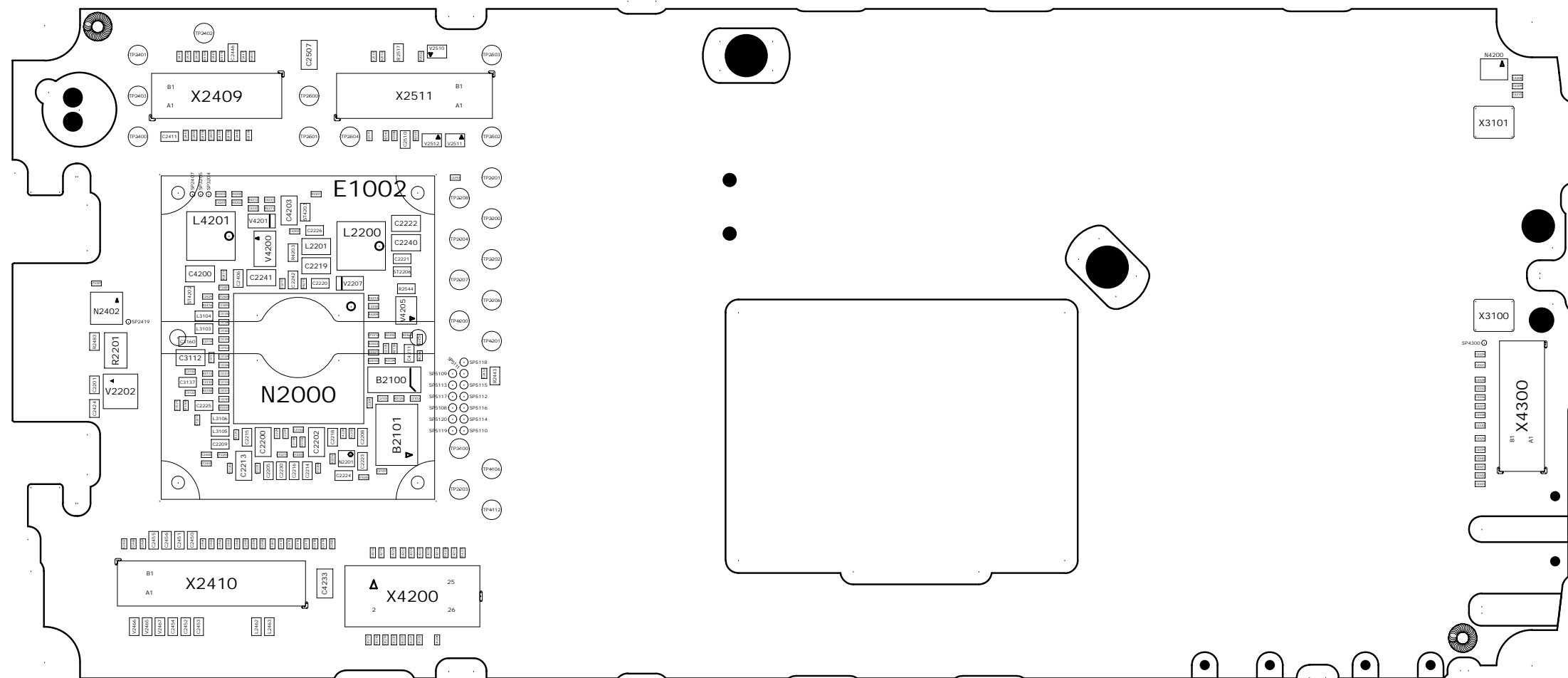
Board Number	Drawing	Comments

By using the “Search” function and enter the component name you can find the position of the component  
(Use Adobe Reader 7.0 or a later version). Example: You can see the component name highlighted on the circuit board (use zoom to enlarge).



## **2 Mounting drawing**





### 3 Revision history

Rev.	Date	Changes / Comments
A	2007-10-11	Initial release
2	2008-02-29	New bord picture
3	2008-05-05	New bord picture